

RICK RECHT

PARTICIPATION SONGBOOK

Shabbat Alive! Songbook

This special Participation Songbook has been created to help you learn and teach Rick Recht songs. This songbook features brand new songs from Rick's new album, *Simply Shabbat*.

These songs are fantastic and super easy to teach.

Questions?

If you have any questions about the songs, Rick's Shabbat Alive!, participation during the Shabbat Alive!, teaching techniques, or anything else, please feel free to email Rick directly at rick@rickrecht.com.





EL NA R'FA NA LA

(MI SHEBERACH)

Words and Music by
Rick Recht

Gently (♩=110)

Intro

D A EMI

1 G A SUS

2 G A

El__

Chorus

D A EMI G A

na r' - fa__ na__ la__

r' - fu - a shle - ma__

El__

D A EMI G A

na r' - fa__ na__ la__

please heal__ this soul__

Verse 1

D A EMI G A

mi she - be - rach

Av - ra-ham v' - Sa - ra

D A EMI G A

Yitz - chak v'-Riv - kah

Ya'-a-kov

Ra-chel

v'-Le - ah

El__

Chorus

D A EMI G A

na r' - fa__ na__ la__

r' - fu - a shle - ma__

El__

D A EMI G A

na r' - fa__ na__ la__

please heal__ this soul__

Verse 2

D **A** **EMI**

with faith and love to - geth - er we bring hope and heal -

G **A** **D** **A**

- ing to those in need with - out judge - ment with - out ex - pla - na -

EMI **G** **A**

- tion for we are all God's cre - a - tion El

Chorus

D **A** **EMI** **G** **A**

na r' - fa na la r' - fu - a shle - ma El

D **A** **EMI** **G** **A**

na r' - fa na la please heal this soul El

Play 3x, fade out last time

D **A** **EMI** **G** **A**

2nd and 3rd x na r' - fa na la r' - fu - a shle - ma El

Every time mi she - be - rach Av - ra - ham v' - Sa - ra

D **A** **EMI** **G** **A**

na r' - fa na la r' - fu - a shle - ma El

Yitz - chak v' - Riv - kah Ya' - a - kov Ra - chel v' - Le - ah

Pick-ups 1st and 2nd x

na r' - fa na la please heal this soul El

Shiru La'Adonai

♩ = 128

Psalm 96
music by Rick Recht

Chorus *capo 2* *G* *A* *Em* *F#m* *D/F#* *E/G#*

Shi - ru la' - A - do - nai la' - A - do - nai

5 *G* *A* *Em* *F#m* *D/F#* *E/G#*

Shir - cha - dash cha - dash

9 *G* *A* *Em* *F#m* *D/F#* *E/G#*

Shi - - ru la' - A - do - nai la' - A - do - nai

13 *G* *A* *Em* *F#m* *D/F#* *E/G#* **Fine**

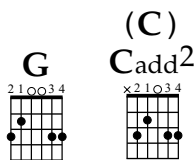
Kol ha' - a - retz ha' - a - retz

Verse *Am* *Bm* *Em* *F#m* *Fma7* *Gma7* *E* *F#* *E7* *F#7*

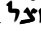
Shi - ru la' - A - do - nai bar - chu sh' - mo

21 *Am* *Bm* *Em* *F#m* *A7sus* *B7sus* *A7* *B7* *D7sus* *E7sus* *D7* *E7* **D.C. al Fine**

Bas - ru mi - yom l' yom y' - shu - a - to



SALAAM / KI VA MOED

Salaam by
Mosh Ben-Ari
Ki Va Moed by
Rabbi Shlomo Carlebach 
Arr. by Rick Recht

Driving (♩=116)

"Salaam"

Chords: G, G, C, C, G

Od ya-vo sha-lom a - lei - nu od ya-vo sha-lom a - lei - nu od ya-vo sha-lom a - lei - nu

Chords: C, D, G, G, G, C, C

v' - al___ ku lam Od ya-vo sha-lom a - lei - nu od ya-vo sha-lom a - lei - nu

Chords: G, C, D, G

od ya-vo sha-lom a - lei - nu v' - al___ ku - lam_____ sa - laam

Chords: G, C, G, C

a - lei - nu v' - al kol ha' - o - lam sa - laam___ sa - laam___ sa - laam___

Chords: G, C, G, D

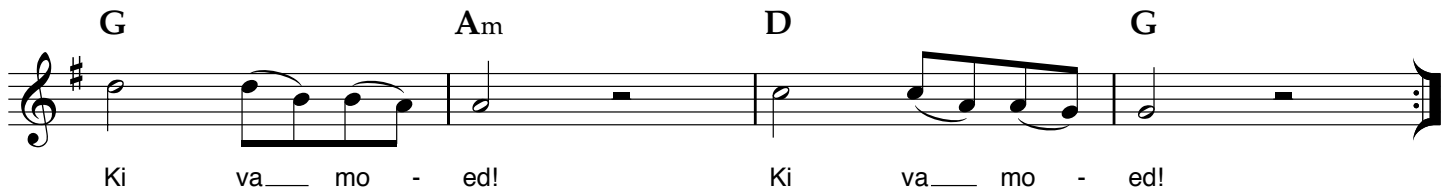
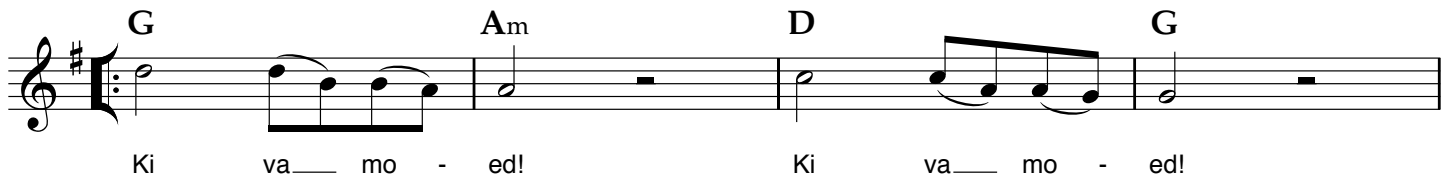
a - lei - nu v' - al kol ha' - o - lam sa - laam___ sa - laam___

Acappella

Od ya-vo sha-lom a-lei-nu od ya-vo sha-lom a-lei-nu od ya-vo sha-lom a-lei-nu v' - al___ ku lam

“Ki Va Moed”

Whole notes strums first time - then groove

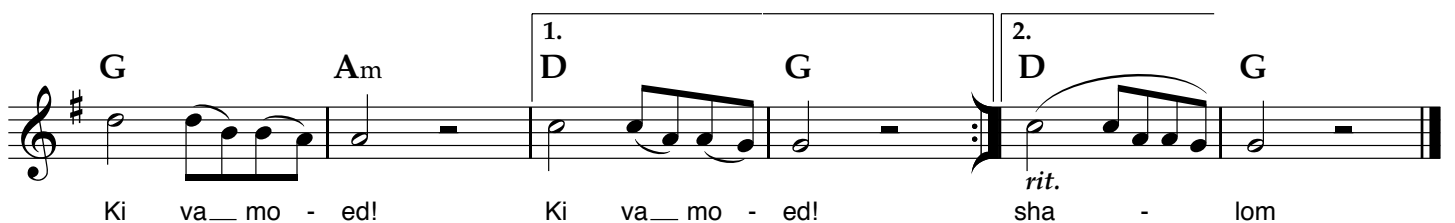
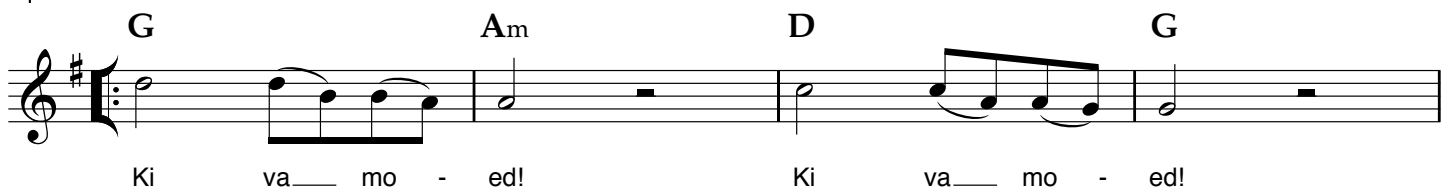


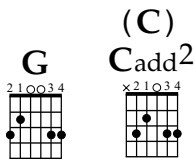
to Coda



D.S. al Coda with repeats

Coda



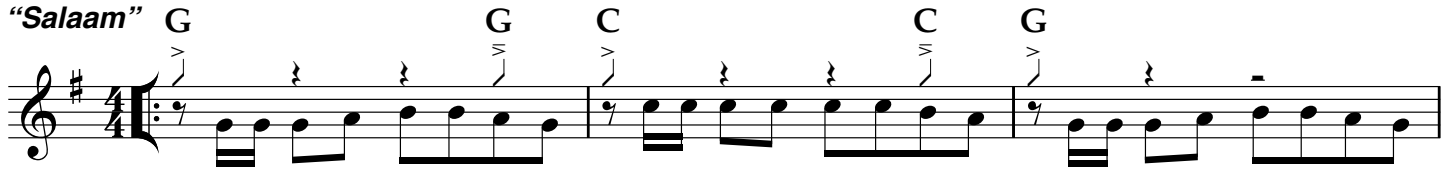


SALAAM

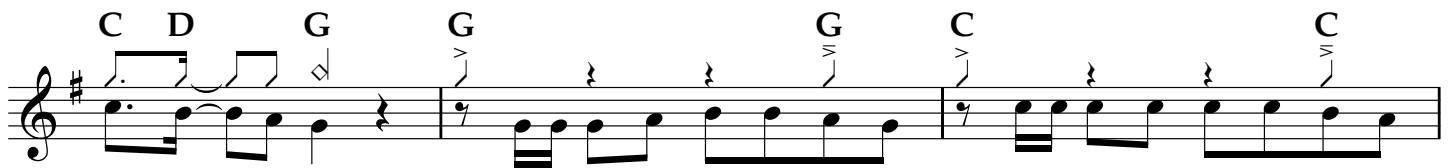
Salaam by
Mosh Ben-Ari
Ki Va Moed by
Rabbi Shlomo Carlebach ~~kmz~~
Arr. by Rick Recht

Driving (♩=116)

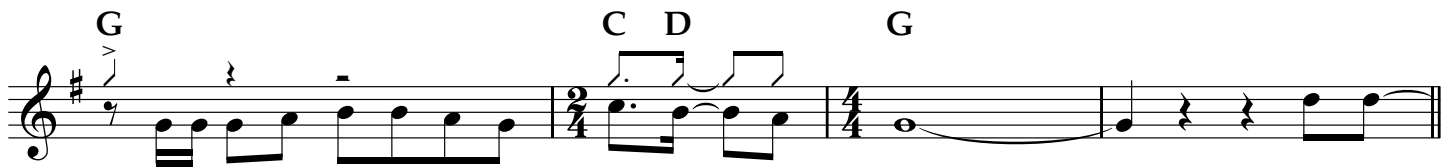
"Salaam"



Od ya-vo sha-lom a - lei - nu od ya-vo sha-lom a - lei - nu od ya-vo sha-lom a - lei - nu



v' - al___ ku lam Od ya-vo sha-lom a - lei - nu od ya-vo sha-lom a - lei - nu



od ya-vo sha-lom a - lei - nu v' - al___ ku - lam_____ sa - laam



a - lei - nu v' - al kol ha' - o - lam sa - laam___ sa - laam___ sa - laam___

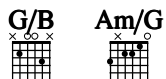


a - lei - nu v' - al kol ha' - o - lam sa - laam___ sa - laam___

Acappella



Od ya-vo sha-lom a-lei-nu od ya-vo sha-lom a-lei-nu od ya-vo sha-lom a-lei-nu v'-al___ ku lam



Romemu

Psalm 99
music by Rick Recht

Chorus $\text{♩} = 75$ *capo 2* *C* *D* *G/B* *A/C#* *Am* *Bm* *Am/G* *Bm/A* *Dm* *Em*

Ro-me-mu, _____ Ro-me-mu, _____ Ro - me-mu _____ Ro-me-mu _____ A-do- nai _____ El - o - hei - nu

ECHO

4 *Am* *Bm* *G* *A* *C* *D* *G/B* *A/C#* *Am* *Bm* *Am/G* *Bm/A*

v'-hish- ta - cha - vu _____ Ro-me- mu _____ Ro-me-mu, _____ Ro - me-mu _____ Ro-me-mu _____ A-do- nai

ECHO

7 *Dm* *Em* *Am* *Bm* *G* *A* *C* *D*

_____ El - o - hei - nu v'-hish- ta - cha - vu _____ l' - har _____ kod- sho

Verse 10 *Dm* *Em* *G* *A* *C* *D* *G/B* *A/C#* *Am* *Bm* *Dm* *Em* *G* *A*

Ki _____ ka - dosh, ki ka - dosh A-do - nai _____ El - o - hei - nu Ro - me - mu

13 *C* *D* *Dm* *Em* *G* *A* *C* *D* *G/B* *A/C#* *Am* *Bm*

_____ Ki _____ ka - dosh, ki ka - dosh A - do - nai _____

16 *Dm* *Em* *Am* *Bm* *F* *G* *Gsus* *Asus* *G* *A* **Chorus**

_____ El - o - hei - nu A-do - nai _____ El - o - hei - nu _____ Ro - me - mu,

20

C
D

G/B
A/C#

Am
Bm

Am/G
Bm/A

Dm
Em

ECHO

Ro - me - mu, Ro - me - mu Ro - me - mu A - do - nai El - o - hei - nu

23

Am
Bm

G
A

C
D

G/B
A/C#

Am
Bm

Am/G
Bm/A

ECHO

v' - hish - ta - cha - vu Ro - me - mu Ro - me - mu, Ro - me - mu Ro - me - mu A - do - nai

26

Dm
Em

Am
Bm

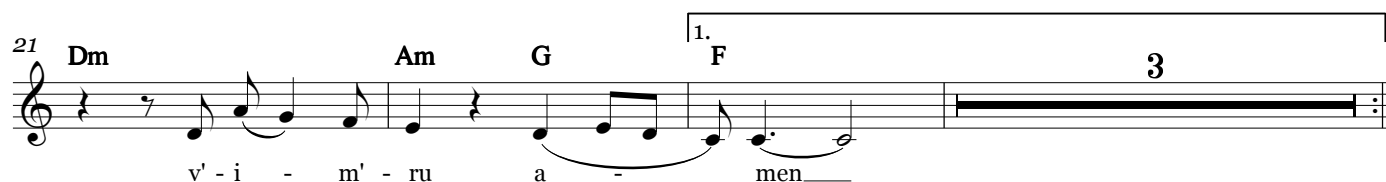
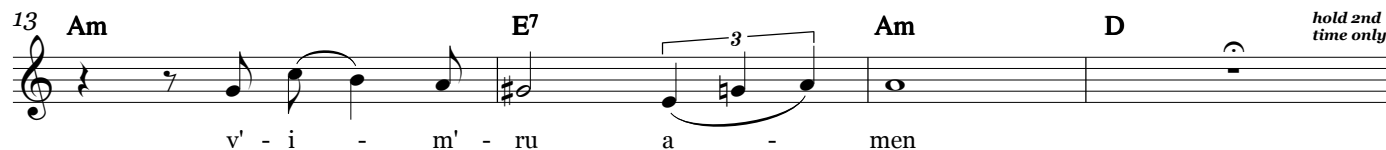
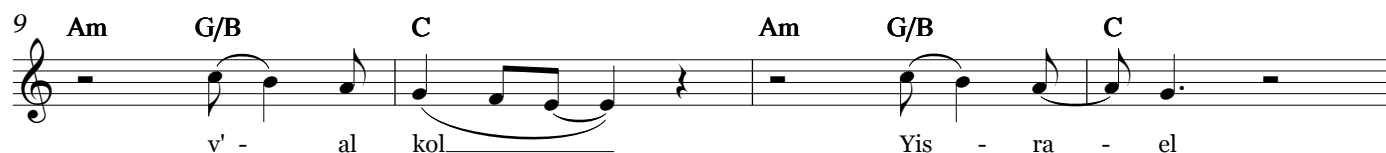
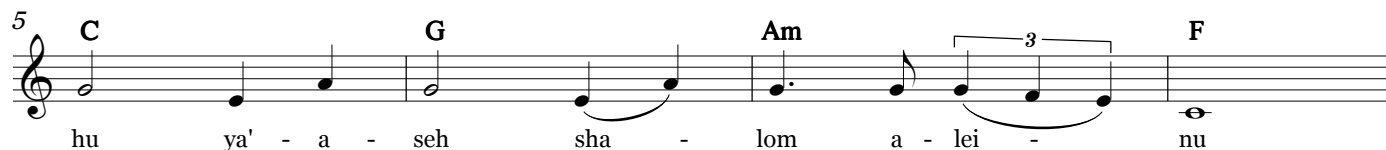
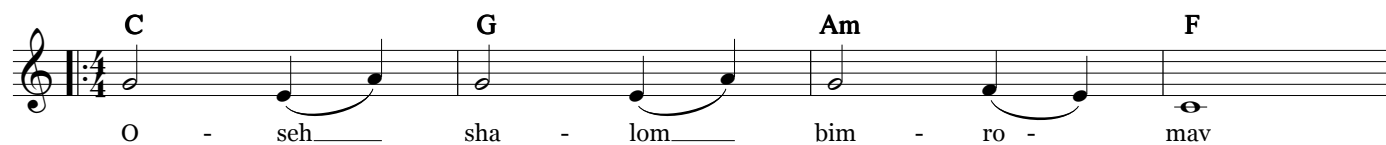
G
A

C
D

El - o - hei - nu v' - hish - ta - cha - vu I' - har kod - sho

Oseh Shalom

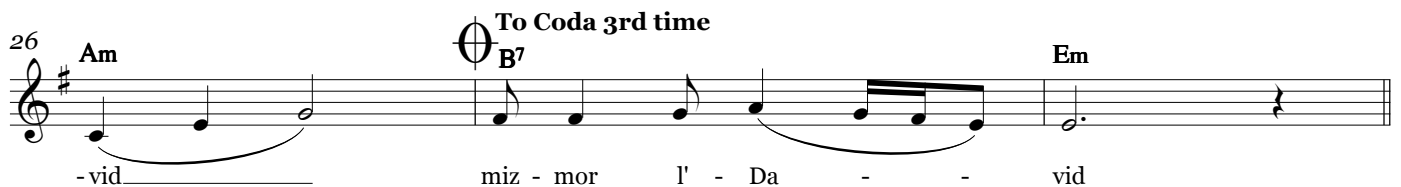
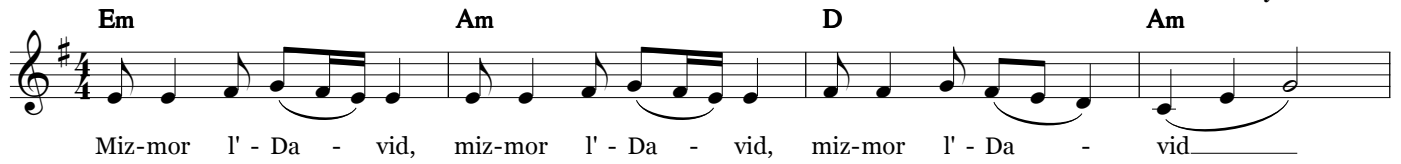
Liturgy
music by Rick Recht



Mizmor L'David

Latin Feel

Psalm 29
music by Rick Recht



2

Verse 2

29 **1.** **Em** **D** **Am** **B⁷**

kol A - do - nai al ha - ma - yim el ha - ka - vod hir' - im

33 **C** **G** **Am** **B⁷**

A - do - nai al ma-yim ra - bim A - do - nai al ma-yim ra - bim

Verse 3

37 **2.** **Em** **D** **Am** **B⁷**

A-do-nai la - ma - bul la - ma-bul ya - shav va - ye-shev A - do - nai me-lech l' - o - lam

41 **C** **G** **Am** **B⁷**

A - do - nai oz l' - a - mo yi - ten A - do - nai y' - va - rech et a - mo va-sha-lom

45 **CODA** **B⁷** **Em**

miz-mor l' - Da - vid Hey! Hey! Hey! Hey

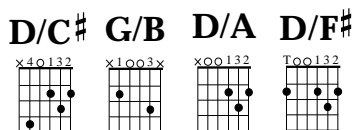
Final Chorus

49 **Em** **Am** **D** **Am**

yai yai yai dai dai yai yai yai dai dai yai yai dai dai dai yai yai dai dai

53 **Em** **Am** **D** **Em**

yai yai yai dai dai yai yai yai dai dai miz-mor l' - Da - vid



MI CHAMOCHA

Winner 2000 American Jewish
Music Festival
Music by Rick Recht
Liturgy
Exodus

Gently (♩=125)

Guitar capo
2nd fret:

Solo

Chord progression for the first line of music:

D	D/C#	G/B	D/A	G	D/F#	Em	A
E	E/D#	A/C#	E/B	A	E/G#	F#m	B

The first line of music is a solo guitar part in 4/4 time. It begins with a rest, followed by a series of eighth and quarter notes, and ends with a half note.

Mi — cha - mo - cha ba' - e - lim A - do - nai

Chord progression for the second line of music:

D	D/C#	G/B	D/A	G	A	D
E	E/D#	A/C#	E/B	A	B	E

The second line of music is a solo guitar part in 4/4 time. It begins with a rest, followed by a series of eighth and quarter notes, and ends with a half note.

Mi — ka - mo - cha ne' - e - dar ba ko - desh

Chord progression for the third line of music:

D	D/C#	G/B	D/A	G	D/F#	Em	A
E	E/D#	A/C#	E/B	A	E/G#	F#m	B

The third line of music is a choir part in 4/4 time. It consists of a single note held for the duration of the line.

no - ra te hi - lot

Chord progression for the fourth line of music:

D	D/C#	G/B	D/A	G	A	D
E	E/D#	A/C#	E/B	A	B	E

The fourth line of music is a choir part in 4/4 time. It consists of a single note held for the duration of the line.

o - seh — o - seh fe - leh

Chord progression for the fifth line of music:

D	D/C#	G/B	D/A	G	D/F#	Em	A
E	E/D#	A/C#	E/B	A	E/G#	F#m	B

The fifth line of music is a solo/choir part in 4/4 time. It begins with a rest, followed by a series of eighth and quarter notes, and ends with a half note.

no - ra te hi - lot

Mi — cha - mo - cha ba' - e - lim A - do - nai

Mi Chamocha, pg. 2

D **D/C#** **G/B** **D/A** **G** **A** **D**
E **E/D#** **A/C#** **E/B** **A** **B** **E**

o - seh - o - seh fe - leh

Mi - ka - mo - cha ne' - e - dar ba ko - desh

This system contains the first two staves of music. The top staff is in treble clef with a key signature of three sharps (F#, C#, G#). It features a melody with notes G4, A4, B4, and C5. The bottom staff is in treble clef and provides a harmonic accompaniment with notes G3, A3, B3, and C4. The lyrics are written below the staves, with hyphens indicating syllables that span across multiple notes.

Em **A** **D** **D/C#** **G/B** **D/A**
F#m **B** **E** **E/D#** **A/C#** **E/B**

Solo *Choir A*

who is like You? who is like you, A - do - nai?

This system contains the third and fourth staves. The top staff continues the melody from the first system, with notes D4, E4, F#4, and G4. The bottom staff continues the accompaniment. The lyrics 'who is like You?' and 'who is like you, A - do - nai?' are written below the staves. The 'Solo' and 'Choir A' labels indicate the start of different vocal parts.

G **A** **D** **D**
A **B** **E** **E**

Choir B/C

who is like You, A - do - nai?

This system contains the fifth and sixth staves. The top staff continues the melody with notes A4, B4, and C5. The bottom staff continues the accompaniment. The lyrics 'who is like You, A - do - nai?' are written below the staves. The 'Choir B/C' label indicates the start of a new vocal part.

Em **A** **D** **D/C#**
F#m **B** **E** **E/D#**

Solo *Choir A*

when Mos - es and the chil - dren crossed the sea they sang to You

This system contains the seventh and eighth staves. The top staff continues the melody with notes D4, E4, F#4, and G4. The bottom staff continues the accompaniment. The lyrics 'when Mos - es and the chil - dren crossed the sea they sang to You' are written below the staves. The 'Solo' and 'Choir A' labels indicate the start of different vocal parts.

G/B **D/A** **G** **A** **C**
A/C# **E/B** **A** **B** **D**

Choir B/C

with songs of joy who is like You, A - do - nai?

This system contains the ninth and tenth staves. The top staff continues the melody with notes G4, A4, B4, and C5. The bottom staff continues the accompaniment. The lyrics 'with songs of joy who is like You, A - do - nai?' are written below the staves. The 'Choir B/C' label indicates the start of a new vocal part.

C **A_{sus}** **A**
D **B_{sus}** **B**

This system contains the eleventh and twelfth staves. The top staff continues the melody with notes D4, E4, and F#4. The bottom staff continues the accompaniment. The lyrics are not present in this system, but the musical notation concludes the piece with sustained chords.

D **D/C#** **G/B** **D/A** **G** **D/F#** **Em** **A**
E **E/D#** **A/C#** **E/B** **A** **E/G#** **F#m** **B**

Solo

Mi _____ cha - mo - cha ba' - e - lim A - do - nai

D **D/C#** **G/B** **D/A** **G** **A** **D**
E **E/D#** **A/C#** **E/B** **A** **B** **E**

Mi _____ ka - mo - cha ne' - e - dar ba ko - desh

D **D/C#** **G/B** **D/A** **G** **D/F#** **Em** **A**
E **E/D#** **A/C#** **E/B** **A** **E/G#** **F#m** **B**

Choir B/C

no - ra te hi - lot

Solo/Choir A second time

Mi _____ cha - mo - cha ba' - e - lim A - do - nai

D **D/C#** **G/B** **D/A** **G** **A** **D**
E **E/D#** **A/C#** **E/B** **A** **B** **E**

o - seh - o - seh fe - leh

Mi _____ ka - mo - cha ne' - e - dar ba ko - desh

Choir B/C $\begin{matrix} D \\ E \end{matrix}$ $\begin{matrix} D/C^\# \\ E/D^\# \end{matrix}$ $\begin{matrix} G/B \\ A/C^\# \end{matrix}$ $\begin{matrix} D/A \\ E/B \end{matrix}$ $\begin{matrix} G \\ A \end{matrix}$ $\begin{matrix} D/F^\# \\ E/G^\# \end{matrix}$ $\begin{matrix} E_m \\ F^\#_m \end{matrix}$ $\begin{matrix} A \\ B \end{matrix}$

no - ra te hi - lot

Choir D

Mi cha - mo - cha ba' - e - lim A -

Choir A

Mi cha - mo - cha ba' - e - lim A - do - nai

Choir B/C $\begin{matrix} D \\ E \end{matrix}$ $\begin{matrix} D/C^\# \\ E/D^\# \end{matrix}$ $\begin{matrix} G/B \\ A/C^\# \end{matrix}$ $\begin{matrix} D/A \\ E/B \end{matrix}$ $\begin{matrix} G \\ A \end{matrix}$ $\begin{matrix} A \\ B \end{matrix}$

o - seh o - seh fe -

Choir D

- do - nai - Mi ka Mi ka - mo -

Choir A

Mi ka - mo - cha ne' - e - dar ba ko -

Choir B/C **D** **E** **D/C#** **E/D#** **G/B** **A/C#** **D/A** **E/B** **G** **A** **D/F#** **E/G#** **Em** **F#m** **A** **B**

leh no - ra te hi - lot

who is like You, A - do - nai? Mi Cha-

cha Mi cha - mo - cha ba' - e - lim A -

desh Mi - cha - mo - cha ba' - e - lim A - do - nai

Choir B/C **D** **E** **D/C#** **E/D#** **G/B** **A/C#** **D/A** **E/B** **G** **A** **B** **D** **E**

o - seh - o - seh fe - leh


- mo - cha ba'-e - lim A - do - nai

do - nai - Mi ka Mi ka - mo - cha

Mi - ka - mo - cha ne' - e - dar ba ko - desh


Mi Chamocha, pg. 6

D
E *Solo* **D/C#**
E/D# **G/B**
A/C# **D/A**
E/B **G**
A **D/F#**
E/G# **Em**
F#m **A**
B

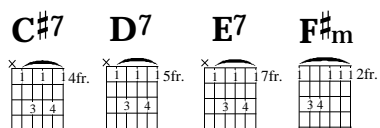


Mi_____ cha - mo - cha ba' - e - lim A - do - nai

D
E *Solo/Choir A* **D/C#**
E/D# **G/B**
A/C# **D/A**
E/B **G**
A **A**
B **D**
E



Mi_____ ka - mo - cha *Choir D*
Choir B/C ne' - e - dar ba ko - desh
ritard.



L'CHA DODI

Music by
Rick Recht

Lyrics by

Rabbi Shlomo HaLevi Alkabetz

Funky (♩=94)

Chorus 1

A7 **C#7** **D7** **E7** **A7** **C#7**

L' - cha do - di li - krat ka-lah___ p'-

L'-cha do - di li-krat ka-lah___ p'-nei Shab-bat___

Bass fill

D7 **E7** **A7** **C#7** **D7** **E7** **A7** **C#7**

- nei Shab-bat___ L' - cha do - di li - krat ka-lah___ p'-

n' - ka - b' - lah___ L'-cha do - di li-krat ka-lah___ p'-nei Shab-bat___

Verse 1

F#m **E7** **D7** **A7**

- nei Shab-bat___

n' - ka - b' - lah___ sha - mor v' - za-chor b' - di - bur___e-chad

C#7 **D7** **B7** **E7** **F#m** **E7** **D7** **A7**

hish - mi'-a-nu el ham'-y - u-chad A - do - nai e-chad u - sh' - mo e-chad l' -

Chorus 2

- sheim ul - ti - fer - et v' - li - t' - lah - lah - lah - lah - lah - lah - li - lah L' - cha do - di

- cha do - di li - krat ka-lah___ p' - nei Shab-bat___ L' - cha do - di
li - krat ka-lah___ p' - nei Shab-bat___ n' - ka - b' - lah___ L' - cha do - di

- cha do - di li - krat ka-lah___ p' - nei Shab-bat___ n' - ka - b' - lah___ li

Verse 2

- krat Shab-bat l' chu v'-nel-chah ki hi m'-kor ha-b'ra - cha me - rosh mi-ke-dem

n' - su - chah sof ma' - a - seh b' - macha-sha - vah t'chi la - la - la - la - la - la - li - la

Chorus 3



Chorus 3 musical notation with chords: A7, C#7, D7, E7, A7, C#7, D7, E7. The melody is in treble clef with a key signature of three sharps (F#, C#, G#). The lyrics are: L' - cha do - di li - krat ka-lah__ p' - nei Shab-bat__ n' - ka - b' -

to Coda



to Coda musical notation with chords: A7, C#7, D7, E7, A7, C#7, D7, E7, A7. The melody is in treble clef with a key signature of three sharps (F#, C#, G#). The lyrics are: L' - cha do-di li - krat ka-lah__ p' - nei Shab-bat - lah__ L' - cha do-di li - krat ka-lah__ p' - nei Shab-bat__ n' - ka - b' - lah__ bo' -

Verse 3

Verse 3 musical notation with chords: F#m, E7, D7, A7, C#7, D7, B7, E7, F#m, E7, D7, A7. The melody is in treble clef with a key signature of three sharps (F#, C#, G#). The lyrics are: - i v' - sha-lom a - ter - et ba' - alah gam b' - sim - cha uv - tzo - ho - lah toch e - mu - nei am s' - gu - lah bo' -

D.S. al Coda

D.S. al Coda musical notation with chords: B7, D7, E7, A7, C#7. The melody is in treble clef with a key signature of three sharps (F#, C#, G#). The lyrics are: - i ka - lah bo' - i ka - lah - la - la - la - la - li - la L' - cha do - di

Coda

A7 C#7 D7 E7 A7 C#7

L' - cha do - di li - krat ka - lah p' - nei Shab - bat

- lah come my be - lov - ed to greet the bride__ wel-come the Shab-bat queen__

D7 E7 A7 C#7 D7 E7

n' - ka - b' - lah L' - cha do - di li - krat ka - lah

what a glor - i - ous time!__ come my be - lov - ed to greet the bride__

A7 C#7 D7 E7 B7

p' - nei Shab - bat n' - ka - b' - lah time!__ yeah__

wel-come the Shab-bat queen__ what a glor - i - ous time!__ yeah__

D7 E7 A7

yeah__

yeah__ L' - cha do - di

Ki Va Moed

Words from Psalm 102:14
Music by Shlomo Carlebach (z"l),
arr. Rick Recht

Driving (♩ = 144)

mf **G**

Ya lai lai lai__ lai *Kids: echo* ya lai lai lai__ lai, *sim.*

Am **G** *Fine*

ya lai lai lai__ lai, ya lai lai, ya lai lai. *Repeat several times, in various silly ways.*

G *Kids*

Ev-ery-bod-y say: Ki. *Ki.* Ev-ery-bod-y say: Va.

Va. Ev-ery-bod-y say: Mo - eid. **Mo - eid.** Say:

p *Repeat 4x, cresc. poco a poco*

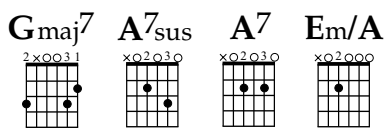
Mo - eid. **Mo - eid.** Say: Ki va mo-eid! **Ki va mo-eid!**

G **Am** **D** **G** *Repeat 3x*

Ki va__ mo - eid! Ki va__ mo - eid!

G **Am** **D** **C** *D.C. al Fine*

The time__ has__ come! The time__ has__ come!_____



HINEI

Music by
Rick Recht and Emily Luhrs
Psalm 133:1

Gently (♩.=46)

Chords in parentheses are optional.

Guitar capo

3rd fret: D

Chorus 1

Chorus 1

Chords: D, F, D⁷, F⁷, G, B^b, (G^{maj7}), (A^{7sus}), A⁷, (B^b^{maj7}), (C^{7sus}), C⁷

Hi - nei mah tov u - ma na - 'im she-vet a - chim gam ya - chad Hi -

Chords: D, F, D⁷, F⁷, E^m, G^m, A⁷, C⁷, D, F

- nei mah tov u - ma na - 'im she-vet a - chim gam ya - chad Hi -

Chorus 2

Chorus 2

Chords: D, F, D⁷, F⁷, G, B^b, (G^{maj7}), (A^{7sus}), A⁷, (B^b^{maj7}), (C^{7sus}), C⁷

- nei mah tov u - ma na - 'im she-vet a - chim gam ya - chad Hi -

Chords: D, F, D⁷, F⁷, E^m, G^m, A⁷, C⁷, D, F

- nei mah tov u - ma na - 'im she-vet a - chim gam ya - chad Hi -

Verse

Verse

Chords: F^{#m}, A^m, (F^{#m7}), (A^{m7}), B^m, D^m, (B^{m7}), (D^{m7}), C, E^b, (C^{add2}), (E^b^{add2}), (A^{7sus}), (C^{7sus}), A⁷, C⁷

- nei mah tov u - ma na - 'im she-vet a - chim gam ya - chad Hi -

Chords: F^{#m}, A^m, (F^{#m7}), (A^{m7}), B^m, D^m, (B^{m7}), (D^{m7}), G, B^b, (D/F[#]), (F/A), (A^{7sus}), (C^{7sus}), A⁷, C⁷, (E^m/A), (G^m/C), A⁷, C⁷

- nei mah tov u - ma na - 'im she-vet a - chim gam ya - chad Hi -

Play 3x
Chorus 3

(counter-melody/harmony)

D
F

D⁷
F⁷

G
B^b

(G^{maj7})
(B^bmaj⁷)

(A^{7sus})
(C^{7sus})

A⁷
C⁷

Hi - nei mah tov u - ma na - 'im she-vet a - chim gam ya - chad Hi -

D
F

D⁷
F⁷

E_m
G_m

A⁷
C⁷

D
F

she - vet a - chim gam ya - chad

- nei mah tov u - ma na - 'im she-vet a - chim gam ya - chad Hi -

Chorus 4

D
F

D⁷
F⁷

G
B^b

(G^{maj7})
(B^bmaj⁷)

(A^{7sus})
(C^{7sus})

A⁷
C⁷

- nei mah tov u - ma na - 'im she-vet a - chim gam ya - chad Hi -

D
F

D⁷
F⁷

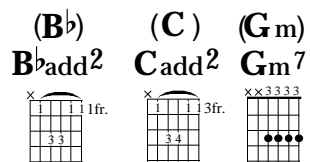
E_m
G_m

A⁷
C⁷

D
F

- nei mah tov u - ma na - 'im she-vet a - chim gam ya - chad

ritard

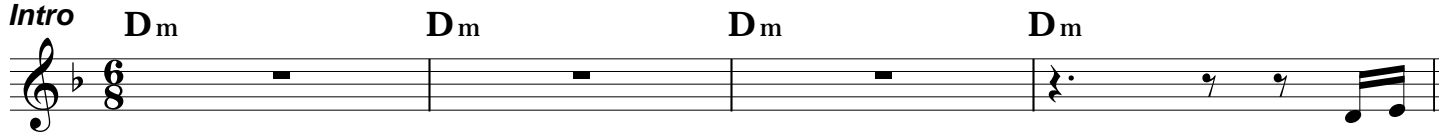


BARECHU

Music by
 Rick Recht
 Liturgy

Gently (♩.=52)

Intro

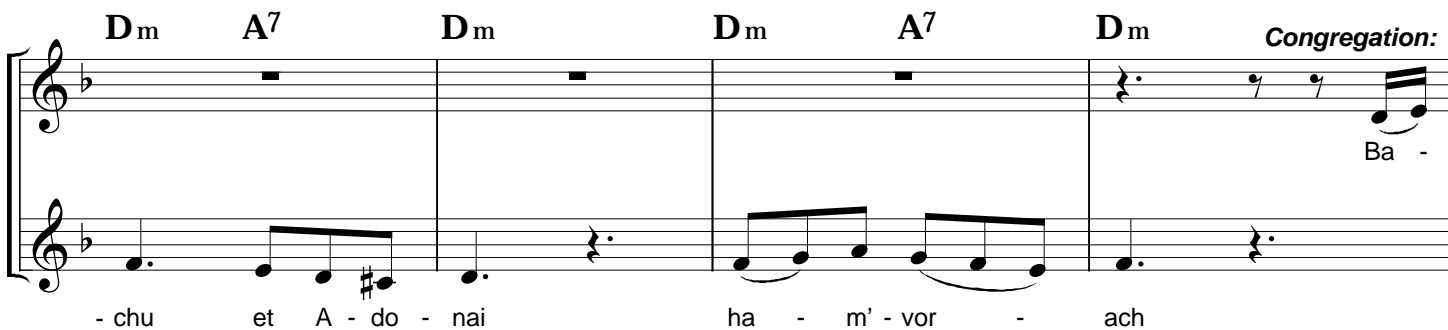


Ya lai



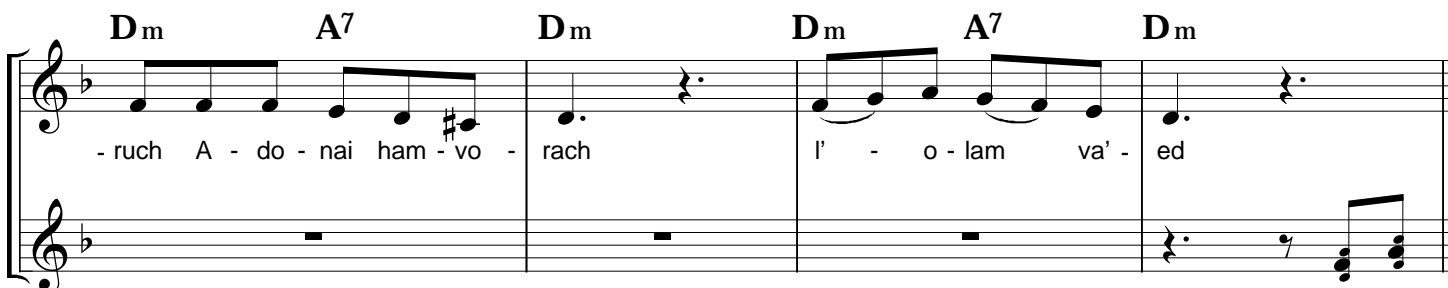
Leader:

Ba-re -



Congregation:

Ba -



I' - o -

Chorus

l' - o - lam l' - o - lam l' - o - lam l' - o - lam l' - o -

- lam l' - o - lam l' - o - lam l' - o - lam l' - o -

- lam va' - ed Ya lai

- lam va' - ed Ya lai

Nigun

lai ya lai lai lai lai Ya lai lai lai lai lai lai lai lai Ya lai

lai ya lai lai lai lai Ya lai lai lai lai lai lai lai lai Ya lai

lai ya lai lai lai lai Ya lai lai lai lai lai lai lai lai

lai ya lai lai lai lai Ya lai lai lai lai lai lai lai lai

15. Salaam/Ki Va Moed

Salaam by Mosh Ben-Ari
Ki Va Moed by Rabbi Shlomo Carlebach 
Arranged by Rick Recht

Verse 1: G G
Od yavo shalom aleinu

C C
od yavo shalom aleinu

G G C D G
od yavo shalom aleinu, v'--al kulam **(2x)**

Chorus 1: G C G C
salaam aleinu v'al kol ha'olam, salaam, salaam

G C G D
salaam aleinu v'al kol ha'olam, salaam, salaam

(REPEAT VERSE 1, CHORUS 1, VERSE 1 THEN GO TO VERSE 2)

Verse 2: G Am D G
Ki va moed Ki va moed **(4x)**

Chorus 2: G G G Am G
Ya lai lai lai lai Ya lai lai lai lai Ya lai lai Ya lai lai **(2x)**

Am Am G G
Ya lai lai lai lai Ya lai lai lai lai Ya lai lai lai lai **(2x)**

Verse 3: G Am D G
Ki va moed Ki va moed **(4x)**

Chorus 3: G G G Am G
Ya lai lai lai lai Ya lai lai lai lai Ya lai lai Ya lai lai **(2x)**

Ending: G Am D G
Ki va moed Ki va moed **(3x)**

G Am D G
Ki va moed Sha-----lom

Oseh Shalom

C G Am F
Oseh Shalom Bimromav

C G Am F
Hu Ya aseh Shalom Aleinu

Am G/B C
V'al kol

Am G/B C
Yisrael

Am E7 Am D
V'imru amen

Dm Am G
V'imru

Dm Am G
V'imru

Dm Am G F (G)
V'imru a - men

8. Mi Chamocha

Music by Rick Recht
Liturgy/ Exodus

Capo 2nd Fret *D* *D/C#* *G/B* *D/A* *G* *D/F#* *Em* *A*
 E *E/D#* *A/C#* *E/B* *A* *E/G#* *F#m* *B*

Verse 1: Mi Chamocha ba'---elim A----- do-----nai

D *D/C#* *G/B* *D/A* *G* *A* *D*
E *E/D#* *A/C#* *E/B* *A* *B* *E*
 Mi Kamocha ne'---edar bako--desh

D *D/C#* *G/B* *D/A* *G* *D/F#* *Em* *A*
E *E/D#* *A/C#* *E/B* *A* *E/G#* *F#m* *B*
Verse 2: No----- ra te-----hi----- lot

D *D/C#* *G/B* *D/A* *G* *A* *D*
E *E/D#* *A/C#* *E/B* *A* *B* *E*
 o-----seh oseh fe-----leh

(AFTER FIRST REPETITION, PLAY VERSE 1 & VERSE 2 IN A ROUND TWO TIMES)

Em *A* *D* *D/C#* *G/B* *D/A*
F#m *B* *E* *E/D#* *A/C#* *E/B*
Bridge: Who is like You? Who is like You, A---donai?

G *A* *D*
A *B* *E*
 Who is like You, Adonai?

Em *A* *D* *D/C#* *G/B* *D/A* *G*
F#m *B* *E* *E/D#* *A/C#* *E/B* *A*
 when Moses and the children crossed the sea, they sang to You with songs of joy,

G *A* *C* *Asus* *A*
A *B* *D* *Bsus* *B*
 who is like You, Adonai?

(GO TO BEGINNING AND REPEAT VERSE 1 WHILE ADDING VERSE 2 AND OTHER HARMONIES)

2. L'cha Dodi

Music by Rick Recht
Lyrics by Rabbi Shlomo HaLevi Alkabetz

Chorus: A7 C#7 D7 E7 A7 C#7 D7 E7
L'cha dodi likrat kalah p'nei Shabbat n' kab'lah **(2x)**

Verse 1: F#m E7 D7 A7 C#7 D7 B7 E7
shamor v'zachor b'dibur echad hishmi-anu el ham'yuchad

 F#m E7 D7 A7 B7 D7 E7
Adonai echad ush'mo echad l'sheim ultiferet v'lit'hila la la la la la la
(CHORUS)

Verse 2: F#m E7 D7 A7 C#7 D7 B7 E7
likrat Shabbat l'chu v'nelchah ki hi m'kor hab'racha

 F#m E7 D7 A7 B7 D7 E7
merosh mikedem n'suchah sof ma'aseh b'machashavah t'chila la la la la la la
(CHORUS)

Verse 3: F#m E7 D7 A7 C#7 D7 B7 E7
bo'i v'shalom ateret ba'alalah gam b'simcha uvtzoholah

 F#m E7 D7 A7 B7 D7 E7
toch emunei am s'gulah bo'i kalah, bo'i kala la la la la la la
(CHORUS)

Final A7 C#7 D7 E7 A7 C#7 D7 E7
Chorus: Come my belov--ed to greet the bride welcome the Shabbat queen what a glorious time!

 A7 C#7 D7 E7 A7 C#7 D7 E7 B7
Come my belov--ed to greet the bride welcome the Shabbat queen what a glorious time!

 D7 E7 A7
Yeah L'cha dodi

Hinei

Music by Rick Recht and Emily Luhrs
Psalm 133:1

Capo 3rd Fret

<i>D</i>	<i>D7</i>	<i>G</i>	<i>GM7</i>	<i>A7sus</i>	<i>A7</i>
F	F7	Bb	Bbmaj7	C7sus	C7

Verse 1: Hinei mah tov uma na'im shevet achim gam yachad

<i>D</i>	<i>D7</i>	<i>Em</i>	<i>A7sus</i>	<i>D</i>
F	F7	Gm	C7sus	F

Hinei mah tov uma na'im shevet achim gam yachad

(REPEAT)

<i>F#m</i>	<i>(F#m7)</i>	<i>Bm</i>	<i>(Bm7)</i>	<i>C</i>	<i>(Cadd2)</i>	<i>(A7sus)</i>	<i>A7</i>
Am	(Am7)	Dm	(Dm7)	Eb	(Ebadd2)	(C7sus)	C7

Verse 2: Hinei mah tov uma na'im shevet achim gam yachad

<i>F#m</i>	<i>(F#m7)</i>	<i>Bm</i>	<i>(Bm7)</i>	<i>G</i>	<i>(D/F#)</i>	<i>A7sus</i>	<i>A7</i>	<i>(Em/A)</i>	<i>A7</i>
Am	(Am7)	Dm	(Dm7)	Bb	(F/A)	C7sus	C7	(Gm/C)	C7

Hinei mah tov uma na'im shevet achim gam yachad

(REPEAT WHOLE SONG, THEN VERSE 1 FOUR TIMES TO END)

5. Barechu

Music by Rick Recht
Liturg

Intro: Dm Dm Dm Dm

Dm A7 Dm Dm A7 Dm
Ya lai lai ya lai lai lai ya lai lai lai lai lai

Dm A7 Dm Dm A7 Dm
Ya lai lai ya lai lai lai ya lai lai lai lai lai

Leader: Dm A7 Dm A7 Dm
Barechu et Adonai ham--vor--ach

Congregation:

Dm A7 Dm Dm A7 Dm
Baruch Adonai hamvorach l'-----olam va'ed

Chorus: F G Bb C
l'olam l'olam l'olam l'olam

F G Gm A7 Dm
l'olam va'----- ed

Ending: Dm A7 Dm Dm A7 Dm
Ya lai lai ya lai lai lai ya lai lai lai lai lai

Dm A7 Dm Dm A7 Dm
Ya lai lai ya lai lai lai ya lai lai lai lai lai